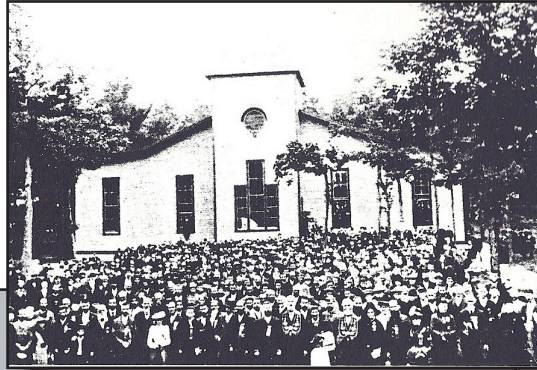


Revisiting a Movement Along the River: Religion, Retreat, and Renewal



*Thousand Island
Park
New York*

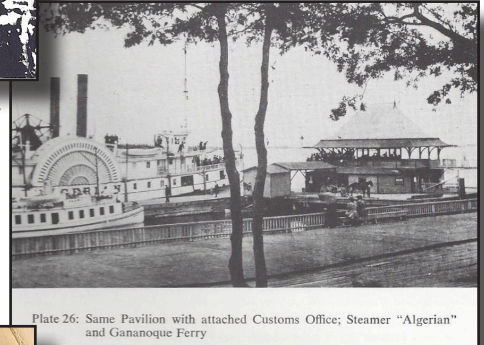
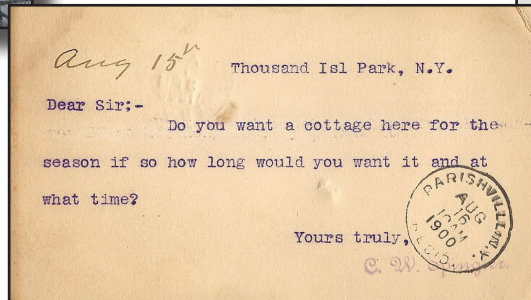


Plate 26: Same Pavilion with attached Customs Office; Steamer "Algerian" and Gananoque Ferry



Thousand Island Park Landmark Society 18th Cottage and Garden Tour

Thursday, July 18, 2019

Cottages, Boathouses, and Gardens

Presentation: *Religious Retreats Along the St. Lawrence*
Points of Interest and Golf Cart Transportation Available

Tours: 9:00 am - Noon & 1:00 pm - 4:00 pm

Purchase Tickets

\$35 (\$30 Members)

\$20 Lunch at the
Wellesley Hotel

Online or at Landmark



Visit Landmark

beginning June 22

Monday - Saturday

11:00 am - 2:00 pm

Phone: 315-482-5150